

Installation Guide R6
XMLMill for Domino

3.00

xmlmill

xmimill

© 2000-2008 Pecunia Data Systems bvba. All rights reserved.

NOTICE: All information contained herein is the property of Pecunia Data Systems bvba.

This publication and the information herein are furnished AS IS, are subject to change without notice, and should not be construed as a commitment by Pecunia Data Systems bvba. Pecunia Data Systems bvba assumes no responsibility or liability for any errors or inaccuracies, makes no warranty of any kind (express, implied, or statutory) with respect to this publication, and expressly disclaims any and all warranties of merchantability, fitness for particular purposes, and noninfringement of third-party rights.

(First printing, May 2003)

Table of Contents

1. Preface.	2
2. Introduction.	3
3. Prerequisites.	5
3.1. R6 release.	5
3.2. XMLMill for Domino R6.	5
4. Installation notes.	6
4.1. Create subdirectories.	6
4.2. Create the servlet subdirectory.	6
4.3. Modify the notes.ini-file.	7
4.4. Create a user to run the servlet and update the usecases-db ACL.	8
4.5. Check your Domino Server Document in the Domino-directory.	9
4.6. Create the servlets.properties file.	10
4.6.1. Default servlets.properties file.	10
4.6.2. Adding a loglevel parameter.	10
4.6.3. Adding a realpath parameter.	11
4.6.4. Adding a config parameter.	11
4.6.5. Adding a logfile parameter.	12
4.7. Restarting your Domino-Server.	12
5. XMLMill online.	14
5.1. Modify the code behind the 'View PDF' link.	14
5.2. Call the usecases database from your browser.	14
6. XMLMill in batch.	17
7. Where should you go next?.	17
8. What to do in case of errors.	18
8.1. Class com.xmlmill.domino.xmlmillr6 could not be located.	18

1. Preface

This installation guide for Domino R6 describes how to install XMLMill on a Domino R6 server.

If you need to install XMLMill on a Domino R5 server please read the Installation Guide for R5 in the same directory as this document.

If you have questions, please do not hesitate to send a mail to support@xmlmill.com.

☞ *This document is completely generated with the latest version of XMLMill. You can find it on our website http://www.xmlmill.com/rnotes/installation_guide_r6.pdf or in the directory **domino/docs** in the download.*

xmlmill

2. Introduction

In our lab XMLMill for Domino R6 was thoroughly tested on:

- ◆ Domino R6.0
- ◆ Domino R6.5

running in a Windows2000 environment.

This document explains the prerequisites and configuration issues for integrating XMLMill with Domino R6. After completing the instructions, you should be able to run the example in the usecases database, which is included in the download of the trial version (See **usecases.nsf** in the **domino/usecases** directory in the download).

☞ *Although this document describes in detail the installation in a Windows2000 environment, XMLMill can also be used with Domino R6 in other operating systems such as Unix. The installation steps are the same.*

Our documentation set consists of following guides:

- ◆ **The domino use cases guide** can be found on the website at <http://www.xmlmill.com/rnotes/dusecases.pdf> or in the directory **domino/docs** in the download. It gives a detailed explanation of using XMLMill for on-line and batch-generation of PDF's following 4 use cases.
- ◆ **The installation guide for on-line-generation of PDF's in R6** can be found on the website at http://www.xmlmill.com/rnotes/installation_guide_r6.pdf or in the directory **domino/docs** in the download. It gives a detailed explanation of preparing your Domino R6-environment for using the XMLMillR6-servlet to generate PDF's on-line.
- ◆ **The installation guide for batch-generation of PDF's in R6 and R5** can be found on the website at http://www.xmlmill.com/rnotes/installation_guide_r5.pdf or in the directory **domino/docs** in the download. It gives a detailed explanation of preparing your Domino R6 or R5-environment for using the batch process to generate PDF's via a scheduled Notes-agent.
- ◆ **The XMLMill user guide** can be found on the website at <http://www.xmlmill.com/rnotes/userguide.pdf> or in the directory **docs** in the download. It gives a general overview of XMLMill. You can also find more information about using external fonts and logging in this guide.
- ◆ **The XMLMill DTD guide** can be found on the website at <http://www.xmlmill.com/rnotes/dtdguide.pdf> or in the directory **docs** in the download. It gives an overview of the tags that can be used in XMLMill.
- ◆ **The XMLMill Release Notes** document can be found on the website at <http://www.xmlmill.com/rnotes/rnotes200.pdf> or in the directory **docs/rnotes** in the download. It gives an overview of the enhancements of this version of XMLMill.

There is also a rich examples-directory in the download (**samples/mill** and **samples/xmlxsl**), where you can find small, but rich examples of using XMLMill-tags. You can use the **XMLMill.html** in the download to try out the examples in this directory. The XMLMill-team is currently preparing a **XMLMill by Example**-guide wich will be released by the end of the year.

A domino-developer has to read the installation guide for R6 and/or the installation guide for R5 to set up the environment. Then he has to switch to the use cases guide to try out the use case(s) of his interest. To find out more about the concept of XMLMill he can read following chapters of the

XMLMill User Guide:

- ◆ Overview
 - ◆ XMLMill Logging
 - ◆ XMLMill Namespace
 - ◆ XMLMill Type1 Fonts
-

-
- ◆ XMLMill Configuration
 - ◆ XMLMill Interactive
 - ◆ XMLMill Batch

If the domino-developer is interested in the tags he may use in XMLMill he has to consult the XMLMill DTD guide.

xmlmill

3. Prerequisites

3.1. R6 release

Currently the **on-line** PDF-generation process only works for Domino R6 version. The `xmlmillr6` servlet uses JDK 1.3, which is included in Domino R6 version. In Domino R5, JDK 1.1.8 is implemented and since this JDK can't be replaced you cannot use XMLMILL to create PDF documents on-the-fly (on request) in R5. You can however use XMLMill in batch (scheduled) in a Domino R5 environment.

3.2. XMLMill for Domino R6

If you haven't already done so, you can download a fully functional trial-version of XMLMill for Domino at <http://www.xmlmill.com> to your Dominoserver.

Extract the content of the .zip or .tar-file to a new subdirectory of your Dominoserver.

In the next section we will explain where you have to place the several components of the download and how to prepare your Domino-environment for XMLMill.

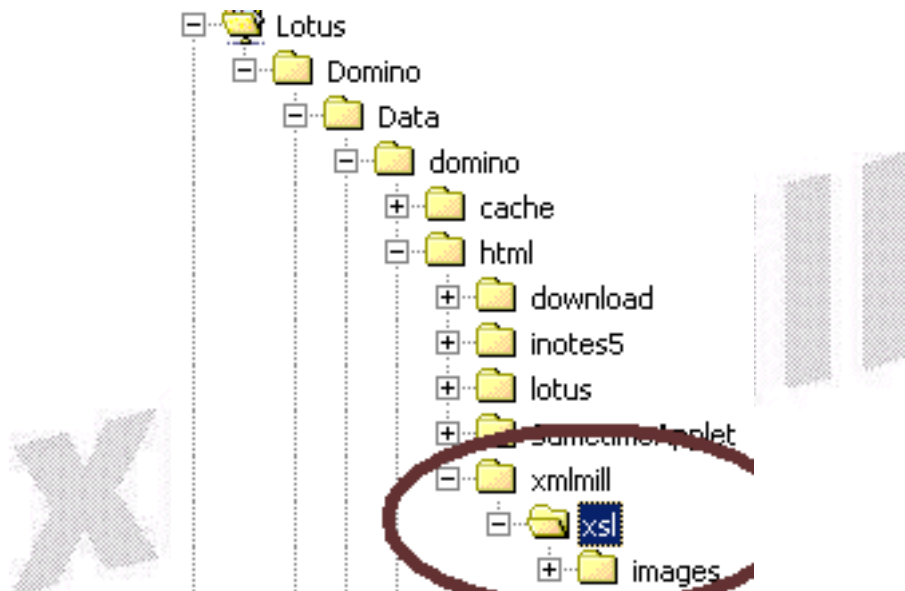
☞ *In the configuration notes we assume your Dominoserver is installed on the program directory **D:\lotus\domino** and that your application-folder is **D:\lotus\domino\data**. If this is not the case in your environment, you should replace the program- and application directory by the filepaths used in your environment.*



4. Installation notes

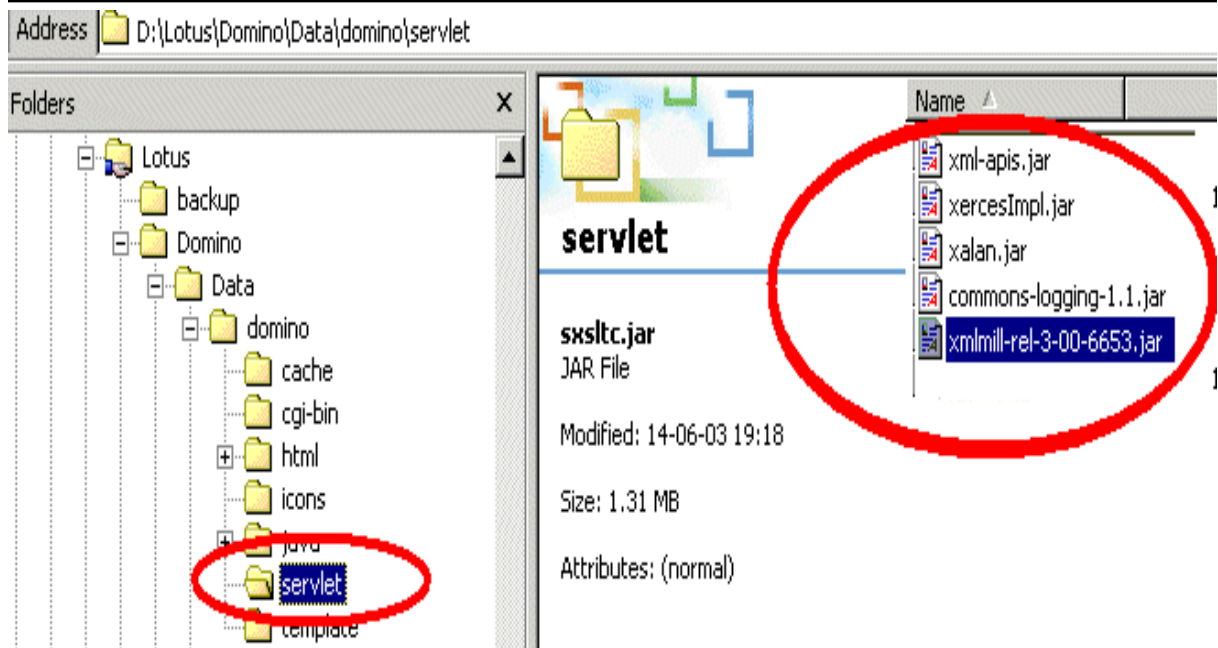
4.1. Create subdirectories

1. On your domino-server locate the directory `\lotus\domino\data\domino\html`.
2. Create a new directory **xmlmill** in this directory.
3. Create a new subdirectory in the xmlmill-directory: **xsl** .
4. Copy the **duquotesdemo.xsl**, the **quote_rt_xhtml.xsl** and the **template_rt_xhtml.xsl** from the download (in the **domino/** directory) in the **xsl** directory.
5. Create a new subdirectory in the xsl-directory: **images**.
6. Copy the images from the download (in the **domino\images** directory) in the **xsl\images** directory.
7. Copy the **usecases.nsf** database from the download (in the **domino\usecases** directory) to the **lotus\domino\data** directory.



4.2. Create the servlet subdirectory

1. On your domino-server locate the directory `\lotus\domino\data\domino`.
2. Create a new directory **servlet** .
3. In the new directory copy all **.jar** files you find in the **lib/** directory: **xalan.jar**, **xercesImpl.jar**, **xml-apis.jar**, **commons-logging-1.1.jar**, **xmlmill.jar**



4.3. Modify the notes.ini-file

In the **notes.ini** of your server, you must enable Java servlets and tell the Domino Server JVM that it should load certain JAR-files to be used in the servlet.

This can be accomplished by adding the **DominoEnableJavaservlets** and the **JavaUserClasses**-parameters to the notes.ini of the server. (our Domino-server was installed on the D-drive.).

If you would add the 2 parameters as in the example below, this would later generate the error that the servlet could not be found, because a notes.ini parameter has a limit of 256 bytes.

CAUTION: In this example the JavaUserClasses-parameter exceeds the 256 byte limit and will generate an error if you restart your server or try to do the example in the usecases.nsf!!!

CAUTION: Do not enter a carriage return or a whitespace in the javauserclasses-parameter!!!! The carriage returns below are only inserted for layout reasons!!!

```
DominoEnableJavaServlets=1
JavaUserClasses=D:\Lotus\Domino\Data\domino\servlet;
D:\Lotus\Domino\Data\domino\servlet\xalan.jar;
D:\Lotus\Domino\Data\domino\servlet\xercesimpl.jar;
D:\Lotus\Domino\Data\domino\servlet\xml-apis.jar;
D:\Lotus\Domino\Data\domino\servlet\xlmill.jar;
D:\Lotus\Domino\Data\domino\servlet\commons-logging-1.1.jar
```

☞ So, if your **JavaUserclasses** parameter goes above the 256 byte limit (as is in this example), you must try to shorten it. This can be done by mapping the **d:\lotus\domino\data\domino\servlet** directory eg as **k:**. Then you can shorten the **JavaUserclasses**-parameter to:

CAUTION: Do not enter a carriage return or a whitespace in the javauserclasses-parameter!!!! The carriage return below is only inserted for layout reasons!!!

```
DominoEnableJavaServlets=1
JavaUserClasses=
k:;k:\xalan.jar;k:\xercesimpl.jar;k:\xml-apis.jar;k:\xlmill.jar;k:\commons-logging-1.1.jar
```

☞ **CAUTION:** do not enter a carriage return or a whitespace in the javauserclasses-parameter!!!! If you do, the servlet will not be found during server-startup and will generate an error.

The mapping of the k-drive (or some other free letter) can be done by issuing the following command on a dos-prompt:

```
subst k: d:\lotus\domino\data\domino\servlet
```

☞ You could put the mapping-command in an batch script and have it executed automatically when the domino-server is started (a **mapping.bat**-file is added in the download (in the **domino\installation** directory).

☞ Caution: Unix-users should use **:** instead of **;** as delimiter between the different jar-files in the notes.ini and adapt the filepath to the filepath conventions in Unix.

In some Domino-installations the k-drive is not recognized. Therefore we present you an alternative to shorten your Javauserclasses-parameter if you experience trouble with the drive mapping: on the filesystem you should rename the jar files eg. as follows:

- ◆ Rename xalan.jar to a.jar
- ◆ Rename xercesimpl.jar to b.jar
- ◆ Renamexml-apis.jar to c.jar
- ◆ Rename xmlmill.jar to d.jar
- ◆ Rename commons-logging-1.1.jar to e.jar

After renaming the jar-files, modify the notes.ini to:

```
CAUTION: Do not enter a carriage return or a whitespace in the
javauserclasses-parameter!!!! The carriage returns below are only inserted for layout
reasons!!!

DominoEnableJavaServlets=1
JavaUserClasses=D:\Lotus\Domino\Data\domino\servlet;
D:\Lotus\Domino\Data\domino\servlet\a.jar;
D:\Lotus\Domino\Data\domino\servlet\b.jar;
D:\Lotus\Domino\Data\domino\servlet\c.jar;
D:\Lotus\Domino\Data\domino\servlet\d.jar;
D:\Lotus\Domino\Data\domino\servlet\e.jar
```

☞ Caution: In any case, the Javauserclasses-parameter may not exceed the 256 byte limit. In the previous example it is slightly lower than 256 bytes.

We provide a sample windows notes.ini with the 2 parameters in the download (in the **domino\installation** directory).

Another, more simple way, is to move the **servlet** directory to the root, for example:

```
CAUTION: Do not enter a carriage return or a whitespace in the
javauserclasses-parameter!!!! The carriage returns below are only inserted for layout
reasons!!!

DominoEnableJavaServlets=1
JavaUserClasses=D:\Lotus\Domino\Data\domino\servlet;
D:\xalan.jar;
D:\xercesimpl.jar;
D:\jaxp-api.jar;
D:\xmlmill.jar;
D:\commons-logging-1.1.jar
```

This way the 256 byte limit will also not be exceeded.

4.4. Create a user to run the servlet and update the usecases-db ACL

You can use an existing id of your company or create a new id eg. xmlmill to run the servlet. Open the ACL of the **usecases** database and add the xmlmill user to the ACL with at least editor-rights.

☞ If you choose to register a new user and you provided a firstname and a lastname for the user,

make sure you enter an alias consisting of only one word in the **Username-field** in the user's person document in the **Domino** directory. You will have to use this alias in the `servlets.properties` file later on (see 4.6.).

Basics	Work/Home	Other	Miscellaneous	Certificates	Administration
Basics					Mail
First name:	xmlmill				Mail:
Middle name:					Dom:
Last name:	xmlmill				Mail:
User name:	xmlmill xmlmill/LAB xmlmill.xmlmill xmlmill				Mail: Forw: Interr: Form: incom:
Alternate name:					When: unen: ency:
Short name/UserID:	xx				
Personal title:					
Generational qualifier:					

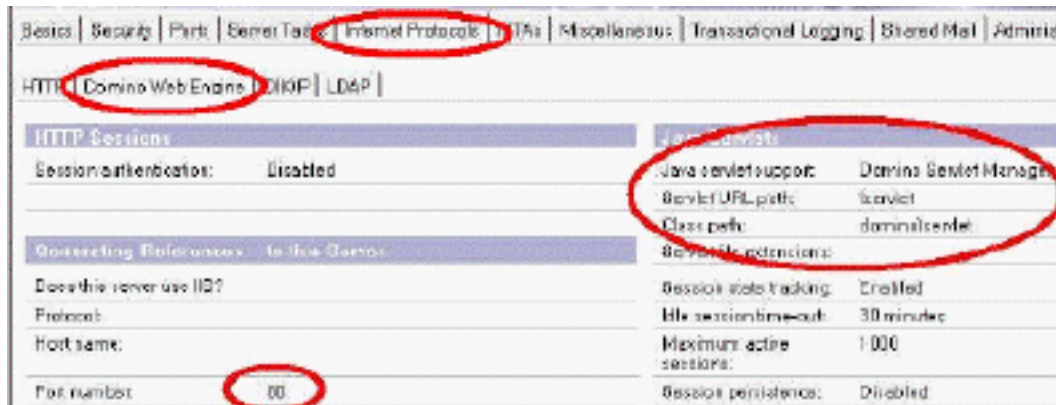
*The Notes-agent (**GenerateQuote**) will "run as webuser", this means it will run with the accessrights of the xmlmill-user you define in the `servlets.properties` file (see 4.6).*

4.5. Check your Domino Server Document in the Domino-directory

In your **Domino** directory go to `servers - server` to open your server document. In your server document locate the tab **security** and make sure that the `xmlmill`-user has the right to **run restricted Lotus Script/Java-agents**.

Basic	Security	Ports	Server Tasks	Internet Protocols	MTAs	Miscellaneous	Transactional Logging	Shared Mail	Administra
Administrators					Programmability Restrictions	Who can -			
Full Access administrators:					Run unrestricted methods and operations:				
Administrators: Administrator Lab/LAB					Sign agents to run on behalf of someone else:				
Database Administrators:					Sign agents to run on behalf of the invoker of the agent:				
Full Remote Console Administrators:					Run restricted LotusScript/Java agents: xmlmill				

Locate the tab **Internet Protocols** and **Domino Web Engine**. Enable the **Java Servlet Support** by choosing **Domino Servlet Manager** instead of **None**. Leave the **Servlet URL** path set to `/servlet`. Add `domino\servlet` to the **Class path** if it isn't there already. This points to the directory where the class-files are stored on the file system. It is the directory you had to create in 4.2.



4.6. Create the `servlets.properties` file

The `servlets.properties` file should be created in the `\lotus\domino\data` directory.

4.6.1. Default `servlets.properties` file

Add the following three lines:

```
# Defines an alias name for the com.xmlmill.domino.xmlmillr6 servlet.
servlet.xmlmillr6.code=com.xmlmill.domino.xmlmillr6

# Define the database, username and password. Make user there are no spaces in the
username.
servlet.xmlmillr6.initArgs= db1=usecases.nsf xmlmill xmlmill

# Define that the servlet is initialised when starting the Domino server.
servlets.startup = xmlmillr6
```

☞ Please note that **servlet** in above lines should be all in lowercase. If not, the Domino server will not find the **xmlmillr6** class.

In the second line the **db1** argument defines the database **usecases.nsf** and the servlet should access this database with the user **xmlmill** and password **xmlmill**. In case your username consists of firstname and lastname, you should have created an alias consisting of one word in the person document (see 4.4.) and use it here as username.

The third line we state that the servlet should be loaded at system startup.

A default `servlets.properties` file is included in the download (in the `domino\installation-directory`).

☞ If you have licensed the multiple database version of XMLMill you can add additional databases by adding a additional arguments; **db2**, **db3**, ... with the respective database names, usernames and passwords, as in the example below:

```
servlet.xmlmillr6.code=com.xmlmill.domino.xmlmillr6
servlet.xmlmillr6.initArgs= db1=usecases.nsf xmlmill xmlmill, db2=usecases2.nsf xmlmill
xmlmill, loglevel=DEBUG
servlets.startup = xmlmillr6
```

You should give **xmlmill** at least editor-rights to the **usecases** database to be able to create and edit the xml-document. (You can limit the **xmlmill** access-rights to author, but then you have to add an author-field with the user **xmlmill** in it to the design of the xml-form).

If you don't specify a user and password to access the notes database, the access level of the server will be used.

4.6.2. Adding a `loglevel` parameter

A second argument **loglevel** can be added to define whether or not all warnings, errors and fatalerrors should be logged on the console. There are 7 different loglevels:

- ◆ OFF
- ◆ ALL

- ◆ **FATAL**
- ◆ **ERROR**
- ◆ **WARN**
- ◆ **INFO**
- ◆ **DEBUG**

```
# Defines an alias name for the com.xmlmill.domino.xmlmillr6 servlet.
servlet.xmlmillr6.code=com.xmlmill.domino.xmlmillr6

# Define the database, username and password. Make user there are no spaces in the
username.
servlet.xmlmillr6.initArgs= db1=usecases.nsf xmlmill xmlmill, loglevel=INFO

# Define that the servlet is initialised when starting the Domino server.
servlets.startup = xmlmillr6
```

Set the **loglevel** to **OFF** if you do not want to clutter your console with messages generated by XMLMill (for example in a production environment).

☞ *Please consult the XMLMill User guide chapter: XMLMill logging, for more information on the loglevel parameters. The XMLMill user guide can be found in the /docs-directory in the download.*

4.6.3. Adding a **realpath** parameter

As of this version the **realpath** can be defined. This is an optional parameter that represents the absolute path to the **xmlmill** directory (in the **html/** directory).

This parameter can be used in case the path to the xmlmill directory, which is normally automatically detected by XMLMill, cannot be found.

When this path cannot be found, the log directory will display following error:

```
...
09/11/2004 08:47:48 HTTP JVM: INFO [Thread-115]: Realpath: null
...
09/11/2004 08:47:57 HTTP JVM: INFO [Thread-115]: Transforming with:
null/xsl/yourstylesheet.xsl
...
09/11/2004 08:47:57 HTTP JVM: INFO [Thread-115]:
Catch-error:javax.servlet.ServletException: xsl file not found
```

Note that the **Realpath: null** message is generated. If this is the case, use the **realpath** parameter to define this path manually, as in following example:

```
# Defines an alias name for the com.xmlmill.domino.xmlmillr6 servlet.
servlet.xmlmillr6.code=com.xmlmill.domino.xmlmillr6

# Define the database, username and password. Make user there are no spaces in the
username.
servlet.xmlmillr6.initArgs= db1=usecases.nsf xmlmill xmlmill, loglevel=INFO,
realpath=/lotus/domino/html/xmlmill

# Define that the servlet is initialised when starting the Domino server.
servlets.startup = xmlmillr6
```

☞ *The **realpath** parameter contains the path upto and including the **xmlmill** directory.*

☞ *Use this parameter **only** if this error occurs. If not, let XMLMill automatically detect the **realpath**.*

4.6.4. Adding a **config** parameter

It is possible to define your own Type1-fonts. To use an external Type1 font you need:

- ◆ the corresponding font-metrics file (**.afm**-file)

- ◆ the corresponding font-program file (**.pfb** or **.pfa**-file)

The locations of these two files need to be defined in a configuration file. This external configuration file may be placed somewhere on the filesystem but in case of XMLMill for Domino you can best place it in your `\lotus\domino\data`-directory. You need to define the location of the configuration file in your `servlets.properties` file, so you should add an extra parameter to the `servlets.properties` file. In this case the `servlets.properties` file could look like this (pay attention to the `config-parameter` in the example below):

```
# Defines an alias name for the com.xmlmill.domino.xmlmillr6 servlet.
servlet.xmlmillr6.code=com.xmlmill.domino.xmlmillr6

# Define the database, username and password. Make user there are no spaces in the
username.
servlet.xmlmillr6.initArgs= db1=usecases.nsf xmlmill xmlmill, loglevel=INFO ,
config=file:/d:/lotus/domino/data/config.xml

# Define that the servlet is initialised when starting the Domino server.
servlets.startup = xmlmillr6
```

For more information on defining your own Type1-fonts, please refer to the XMLMill user guide, chapters XMLMill Type1 Fonts and XMLMill Configuration. The XMLMill user guide can be found in the `/docs`-directory in the download.

4.6.5. Adding a **logfile** parameter

It is possible to define a log-file where XMLMill's messages should be sent to (instead of the console):

You need to define the location of the logfile in your `servlets.properties` file, so you should add an extra parameter to the `servlets.properties` file. In this case the `servlets.properties` file could look like this (pay attention to the `logfile-parameter` in the example below):

```
# Defines an alias name for the com.xmlmill.domino.xmlmillr6 servlet.
servlet.xmlmillr6.code=com.xmlmill.domino.xmlmillr6

# Define the database, username and password. Make user there are no spaces in the
username.
servlet.xmlmillr6.initArgs= db1=usecases.nsf xmlmill xmlmill, loglevel=INFO ,
logfile=file:/d:/lotus/domino/data/log/xmlmill.txt

# Define that the servlet is initialised when starting the Domino server.
servlets.startup = xmlmillr6
```

☞ *The value should represent the location and name of the logfile as an URI. The URI should be fully resolved.*

4.7. Restarting your Domino-Server

In the previous sections you made changes to:

1. The Domino-Server document
2. The `notes.ini`
3. The `servlets.properties` file
4. The substitution of the `lotus\domino\data\domino\servlet`-directory by a drive-letter

All these changes require that you restart (not reboot) your domino-server. So restart it by issuing the domino-console command **restart server**. If you detect an error after start-up and you need to change something in the server document, the `notes.ini`, the `servlets.properties` file or the drive substitution, do not forget to restart your domino server after you applied the changes.

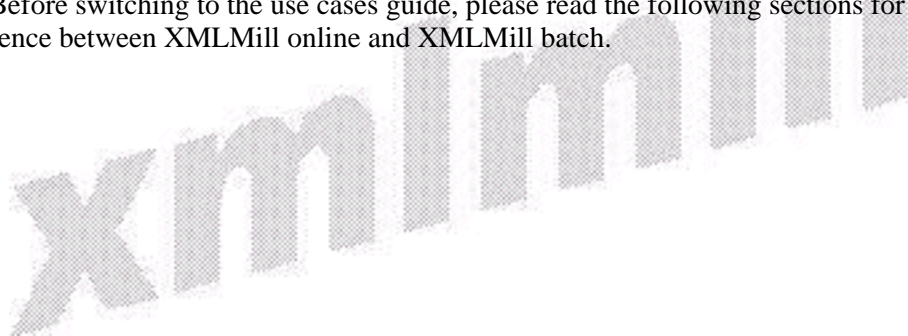
When you restart your server with the **restart server**-console command, you see the initialization of the servlet. If there is a error stating the servlet cannot be found, there is probably a mistake in the `javauserclasses`-parameter of your server or in the drive-mapping. If you change those, do not forget to restart your server.

```

Lotus Domino Server: localhost/biztest
16-11-2003 11:29:03 Agent Manager started
16-11-2003 11:29:03 Router: Unable to obtain Internet host and domain names
16-11-2003 11:29:03 Mail Router started for domain BIZTEST
16-11-2003 11:29:03 Router: Internet SMTP host localhost in domain
16-11-2003 11:29:03 LDAP Server: Starting...
16-11-2003 11:29:04 Administration Process started
16-11-2003 11:29:05 LDAP Server: Serving directory names.nsf in the Internet
domain
16-11-2003 11:29:05 LDAP Schema: Started loading...
16-11-2003 11:29:05 AMQ: Executive '1' started
16-11-2003 11:29:06 HTTP Server: Using Web Configuration View
16-11-2003 11:29:11 JVM: Java Virtual Machine initialized.
16-11-2003 11:29:11 HTTP Server: Java Virtual Machine loaded
16-11-2003 11:29:11 Servlet engine initialization was successful
16-11-2003 11:29:13 LDAP Schema: Finished loading
16-11-2003 11:29:13 LDAP Server: Started verifying directory tree on 'names.n
sf'
16-11-2003 11:29:15 HTTP JVM: com.xmlmill.domino.xmlmillr6: init
16-11-2003 11:29:15 HTTP JVM: XMLMill for Notes & Domino r6 v1.5 ... Multiple
DE License
16-11-2003 11:29:16 HTTP JVM: Loglevel is set to INFO
16-11-2003 11:29:16 HTTP JVM: dbid/username : usecases.nsf/xmlmill
16-11-2003 11:29:16 HTTP JVM: INFO Inain1: Start reading default configurati
on file: com/xmlmill/conf/config.xml (in (c:\xmlmill.jar)
16-11-2003 11:29:17 LDAP Server: Finished verifying directory tree on 'names.n
sf'
16-11-2003 11:29:18 LDAP Server: Started
16-11-2003 11:29:28 HTTP JVM: INFO Inain1: Done reading configuration file (4
346 elapsed (milliseconds))
16-11-2003 11:29:28 HTTP JVM: ClassLoader: sun.misc.Launcher$AppClassLoader@19
8264f6
16-11-2003 11:29:34 HTTP Server: Started
  
```

If you mapped your k-drive by a substitution-command, it will be gone when you reboot your domino-server, so be sure to avoid this. One way to avoid this is to place the **mapping.bat**-file in the **startup**-folder of your Domino-server. This way the substitution will be applied when the server is rebooted.

This concludes the installation of XMLMill in your Domino R6 environment. Your environment is ready to use XMLMill for Domino to generate .pdf documents on-line (on the fly). This is the first use case in our use cases guide, so you can switch to our use cases guide later on. You can find it on our website at <http://www.xmlmill.com/notes/dusecases.pdf> or in the directory **domino\docs** in the download. Before switching to the use cases guide, please read the following sections for an overview of the difference between XMLMill online and XMLMill batch.



5. XMLMill online

In Domino R6 you can use XMLMill online (this means generating a PDF document on-the-fly from within a browser or a notes client) by calling the XMLMill connector. This section explains how you can do this. For detailed information please refer to the **usecases** database in the download (**domino**-directory) and to the first use case in the use cases guide **dusecases.pdf** in the download (**domino\docs**-directory).

5.1. Modify the code behind the 'View PDF' link

To try out this example of generating a PDF based on a quotation-form in Notes, you should modify the code behind the 'View PDF'-link (usecases database). So open the Quote-form in the designer and modify the code behind the hotspots:



Currently the code calls the **xmlmillr6** servlet on the IP-address 192.168.0.10. You should replace this IP-address by the IP-address or server name of your server.

5.2. Call the usecases database from your browser

Now you are ready to call the example in the usecases database:

Open your browser and call the database: **http://yourserver/usecases.nsf:**

Before you try out the servlet, verify that the user you have defined in your servlets.properties file (eg. xmlmill) exists in your domino directory, has enough ACL-rights (at least editor-rights) and that he has the proper execution rights to run agents.



[Previous](#) [Next](#) [Expand](#)

Quotes

	Reference	Company	Form
Quotes	2/0804/JP/0002	ALFREDS FUTTERKISTE	Quote

[Previous](#) [Next](#) [Expand](#)

- [Use Case 1](#)
- [XML Documents](#)
- [Use Case 2](#)
- [Products By Suppli](#)
- [PDFContainer](#)
- [Use Case 3](#)
- [To be Invoiced](#)
- [Use Case 4](#)
- [Overdue Invoices](#)
- [All Documents](#)
- [By CreationDate](#)

Choose [2/0804/P/0002](#):



[View PDF](#) [Save PDF](#) [Save and Mail PDF](#)
[View and Save PDF](#) [View, Save and mail PDF](#)

Reference: [2/0804/JP/0002](#)
SendTo: Tania Schuddinck/biztest

- [Company/Contact](#)
- [Product Tables](#)
- [Text Paragraphs](#)
- [Actors](#)

- [Use Case 1](#)
- [Quotes](#)
- [XML Documents](#)
- [Use Case 2](#)
- [Products By Suppli](#)
- [PDFContainer](#)
- [Use Case 3](#)
- [To be Invoiced](#)
- [Use Case 4](#)
- [Overdue Invoices](#)
- [All Documents](#)
- [By CreationDate](#)

Select **View PDF**, after a few seconds Acrobat reader will open and the generated PDF document is shown in the browser. The first time you execute the servlet after server startup, this will take longer than the 2nd, 3rd time and so on.

XMI Mill
XMI Mill
XMI Mill

Magnolia Bell
Fine Victorian Furniture and Accessories

ALFREDS FUTTERKOSTE
Obere Str. 57
12209 Berlin
Germany
Mario Anders

MIGNOLIA BELL
Center Court Lane 25
21027 Worthing
United Kingdom
Phone: 00 44 1903 89 06
Fax: 00 44 1903 89 12
Internet: www.xmimill.com
E-mail: business@xmimill.com

2100014100012

Dear Mrs. Anders,

With reference to our meeting, we are pleased to send you our quotation for the future supply of **fine Victorian Furnitures and Accessories**. You will find our product offer in the enclosure.

The quoted prices are in Euro and excluding VAT. The prices are valid, provided that the offered quantities have been shipped and invoiced within 12 months after your acceptance of this quotation.

Conditions:

Delivery time:
• 2 weeks

xmimill

6. XMLMill in batch

XMLMill in batch can be used in both Domino R5 and R6. The batch-processing means that you call XMLMill from a scheduled agent. The .cmd file is placed somewhere on a shared networkdrive, so that your server can access it. If you want to use XMLMill in batch you have to follow the instructions in the Installation guide for R5 **even if you are using R6**. You can find it on our website http://www.xmlmill.com/rnotes/installation_guide_r5.pdf or in the directory **domino\docs** in the download.

In the batch files you will call from within your application, you can refer to the **java.exe** contained in the **\\your_server\Lotus\Domino\jvm\bin** directory.

Once you've followed the instructions in the installation guide, please switch to our domino use cases guide **dusecases.pdf** in the download (**domino\docs**)-directory and read the use case 2,3 or 4.

7. Where should you go next?

In the beginning of this Installation guide we introduced our documentation set to you. You are now ready to try out to the example of your interest in the usecases.nsf. If you get errors, you may have to return to this guide to correct possible installation errors.

For your convenience we will repeat the contents of our documentation set below:

- ◆ **The domino use cases guide** can be found on the website at <http://www.xmlmill.com/rnotes/dusecases.pdf> or in the directory **domino\docs** in the download. It gives a detailed explanation of using XMLMill for on-line and batch-generation of PDF's following 4 use cases.
- ◆ **The installation guide for on-line-generation of PDF's in R6** can be found on the website at http://www.xmlmill.com/rnotes/installation_guide_r6.pdf or in the directory **domino\docs** in the download. It gives a detailed explanation of preparing your Domino R6-environment for using the XMLMillR6-servlet to generate PDF's on-line.
- ◆ **The installation guide for batch-generation of PDF's in R6 and R5** can be found on the website at http://www.xmlmill.com/rnotes/installation_guide_r5.pdf or in the directory **domino\docs** in the download. It gives a detailed explanation of preparing your Domino R6 or R5-environment for using the batch process to generate PDF's via a scheduled Notes-agent.
- ◆ **The XMLMill user guide** can be found on the website at <http://www.xmlmill.com/rnotes/userguide.pdf> or in the directory **docs** in the download. It gives a general overview of XMLMill. You can also find more information about using external fonts and logging in this guide.
- ◆ **The XMLMill DTD guide** can be found on the website at <http://www.xmlmill.com/rnotes/dtdguide.pdf> or in the directory **docs** in the download. It gives an overview of the tags that can be used in XMLMill.
- ◆ **The XMLMill Release Notes 2.00** can be found on the website at <http://www.xmlmill.com/rnotes/rnotes200.pdf> or in the directory **docs/rnotes** in the download. It gives an overview of the changes in XMLMill R1.50

There is also a rich examples-directory in the download, where you can find small, but rich examples of using XMLMill-tags. You can use the **XMLMill.html** in the download to try out the examples in this directory. The XMLMill-team is currently preparing a **XMLMill by Example**-guide wich will be released by the end of the year.

A domino-developer has to read the installation guide for R6 and/or the installation guide for R5 to set up the environment. Then he has to switch to the use cases guide to try out the use case(s) of his interest. To find out more about the concept of XMLMill he can read following chapters of the

XMLMill User Guide:

- ◆ Overview
 - ◆ XMLMill Logging
 - ◆ XMLMill Namespace
-

- ◆ XMLMill Type1 Fonts
- ◆ XMLMill Configuration
- ◆ XMLMill Interactive
- ◆ XMLMill Batch

If the domino-developer is interested in the tags he may use in XMLMill he has to consult the XMLMill DTD guide.

8. What to do in case of errors

8.1. Class com.xmlmill.domino.xmlmillr6 could not be located

The most frequently encountered error is **HTTP JVM: Class com.xmlmill.domino.xmlmillr6 could not be located**. This error appears on the server console at server startup or when you try the button **View PDF** in the usecases.nsf.

This error is related to the notes.ini. In case you encounter this error you can check following topics:

- ◆ **Restart your Domino-server with the console command restart server**. The restart of the server is the last thing you should do after you have configured your domino-server as explained in this guide. If you map your k-drive after the restart of the server, Domino doesn't recognize the drive, so you should restart the server again.
- ◆ Check if the **javauserclasses-parameter in the notes.ini > 256 bytes**. If so, you have to map the servlet-directory (eg. lotus\domino\data\domino\servlet) as a drive letter (eg. k), and refer to this drive letter in the notes.ini. Restart your server after these changes.
- ◆ Check if the **k-drive is correctly mapped** to the right directory and that this directory contains the necessary jar-files.
- ◆ It might be the case that your Domino-server doesn't recognize the drive mapping. Please refer to page 10/11 for an alternative way to shorten the javauserclasses parameter without drive mapping.
- ◆ Check any **typing mistakes in the jar-files** in the notes.ini.
- ◆ Check if the **javauserclasses-parameter in the notes.ini doesn't contain any carriage returns or whitespaces**. The javauserclasses-parameter should be one long string.
- ◆ Check if you applied the changes in the right notes.ini: **the notes.ini of the server** and not the notes.ini of the client installed on the server machine.
- ◆ For **Unix-users**: modify the javauserclasses parameter following the **filepath-conventions of Unix**. The delimiter between the jar-files should be a **:** instead of a **;**.

If you checked all these issues and restarted your server as last action and you still experience problems, you can contact support@xmlmill.com. Enclose the console output and the notes.ini of your server. That way our support team can help you best.