

Installation Guide R7
XMLMill for Domino

3.00

xmlmill

xmlmill

© 2000-2008 Pecunia Data Systems bvba. All rights reserved.

NOTICE: All information contained herein is the property of Pecunia Data Systems bvba.

This publication and the information herein are furnished AS IS, are subject to change without notice, and should not be construed as a commitment by Pecunia Data Systems bvba. Pecunia Data Systems bvba assumes no responsibility or liability for any errors or inaccuracies, makes no warranty of any kind (express, implied, or statutory) with respect to this publication, and expressly disclaims any and all warranties of merchantability, fitness for particular purposes, and noninfringement of third-party rights.

(First printing, January 2006)

Table of Contents

1. Preface.	2
2. Introduction.	3
3. Prerequisites.	4
3.1. R7 release.	4
3.2. XMLMill for Domino R7.	4
4. Installation notes.	5
4.1. Create subdirectories.	5
4.2. Copy the XMLMill jar files.	5
4.3. Create a user to run the servlet and update the usecases-db ACL.	6
4.4. Check your Domino Server Document in the Domino-directory.	7
4.5. Create the servlets.properties file.	7
4.5.1. Default servlets.properties file.	7
4.5.2. Adding a loglevel parameter.	8
4.5.3. Adding a realpath parameter.	8
4.5.4. Adding a config parameter.	9
4.5.5. Adding a logfile parameter.	9
4.6. Restarting your Domino-Server.	10
4.7. Conclusion.	10
5. XMLMill online.	11
5.1. Modify the code behind the 'View PDF' link.	11
5.2. Set Runtime Security level.	11
5.3. Call the usecases database from your browser.	12
6. XMLMill in batch.	14
7. Where should you go next?.	15

1. Preface

This installation guide for Domino R7 describes how to install XMLMill on a Domino R7 server.

If you have questions, please do not hesitate to send a mail to support@xmlmill.com.

- ☞ *If you need to install XMLMill on a Domino R5.x server please read the Installation Guide for R5 in the same directory as this document.*
- ☞ *If you need to install XMLMill on a Domino R6.x server please read the Installation Guide for R6 in the same directory as this document.*
- ☞ *This document is completely generated with the latest version of XMLMill. You can find this document back online on our website http://www.xmlmill.com/rnotes/installation_guide_r7.pdf or in the directory **domino/docs** in the download.*

xmlmill

2. Introduction

In our lab XMLMill for Domino R7 was thoroughly tested on:

- ◆ Lotus Domino (r) Server, Release 7.0, August 18, 2005.
- ◆ running in a Windows2000 environment.

This document explains the prerequisites and configuration issues for integrating XMLMill with Domino R7. After completing the instructions, you should be able to run the examples in the usecases database, which is included in the download of the trial version (See **usecases.nsf** in the **domino/usecases** directory in the download).

☞ *Although this document describes in detail the installation in a Windows2000 environment, XMLMill can also be used with Domino R7 in other operating systems such as Unix. The installation steps are the same.*

☞ *Currently XMLMill for Domino runs in a variety of environments like Windows, Linux, AIX, AS/400 and others.*

xmlmill

3. Prerequisites

3.1. R7 release

Currently the **on-line** PDF-generation process only works in the Domino R7/R6 version. The `xmlmillr6` servlet uses JDK 1.3 (or higher), which is included in Domino R7/R6 version. In Domino R5, JDK 1.1.8 is implemented and since this JDK can't be replaced you cannot use XMLMILL to create PDF documents on-the-fly (on request) in R5. You can however use XMLMill in batch (scheduled) in a Domino R5 environment.

3.2. XMLMill for Domino R7

If you haven't already done so, you can download a fully functional trial-version of XMLMill for Domino at <http://www.xmlmill.com> to your Domino server.

Extract the content of the .zip or .tar-file to a new subdirectory in your Domino server.

In the next section we will explain how to prepare your Domino-environment for using XMLMill.

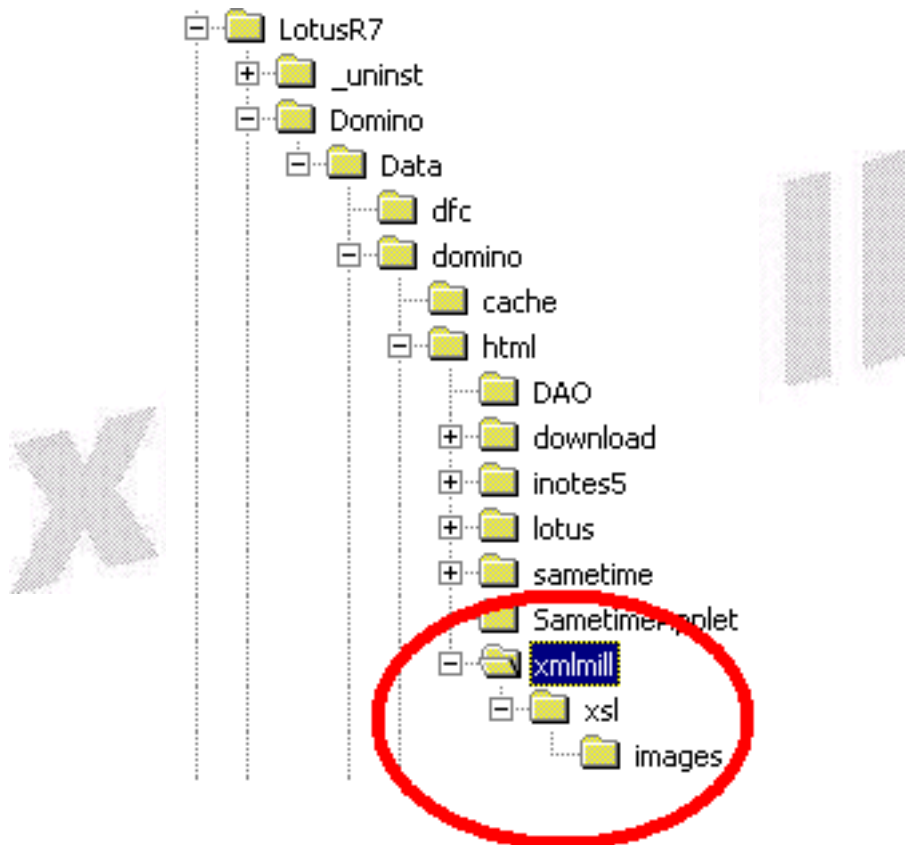
- ☞ *It is assumed that your Dominoserver is installed in the program directory **C:\LotusR7\domino** and that your application-folder is **C:\LotusR7\domino\data**. If this is not the case in your environment, you should replace the program- and application directory by the filepaths used in your environment.*



4. Installation notes

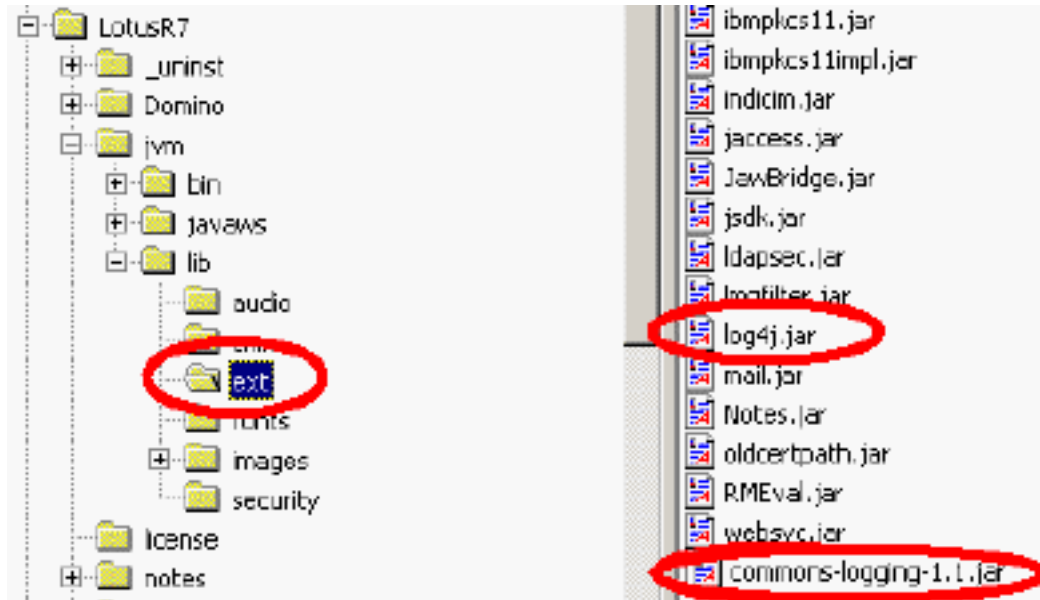
4.1. Create subdirectories

1. On your domino-server locate the directory `\lotus\domino\data\domino\html`.
2. Create a new directory `xmlmill` in this directory.
3. Create a new subdirectory in the `xmlmill`-directory: `xsl`.
4. Copy the `duquotesdemo.xsl`, the `quote_rt_xhtml.xsl` and the `template_rt_xhtml.xsl` from the download (in the `domino/` directory) in the `xsl` directory.
5. Create a new subdirectory in the `xsl`-directory: `images`.
6. Copy the images from the download (in the `domino\images\` directory) in the `xsl\images` directory.
7. Copy the `usecases.nsf` database from the download (in the `domino\usecases` directory) to the `lotus\domino\data` directory.



4.2. Copy the XMLMill jar files

1. Locate the `C:\LotusR7\jvm\lib\ext` directory.
2. Copy following `jar` files from the `lib/` directory (contained in the download): `commons-logging-1.1.jar`, `xmlmill.jar` to the `C:\LotusR7\jvm\lib\ext` directory.



4.3. Create a user to run the servlet and update the usecases-db ACL

You can use an existing id of your company or create a new id eg. xmlmill to run the servlet. Open the ACL of the **usecases** database and add the xmlmill user to the ACL with at least editor-rights.

☞ If you choose to register a new user and you provided a firstname and a lastname for the user, make sure you enter an alias consisting of only one word in the **Username-field** in the user's person document in the **Domino** directory. You will have to use this alias in the **servlets.properties** file later on (see 4.5.).

☞ When a new user is defined make sure the internet password provided is the same as the password that will be defined in the **servlets.properties** file later on (see 4.5.).

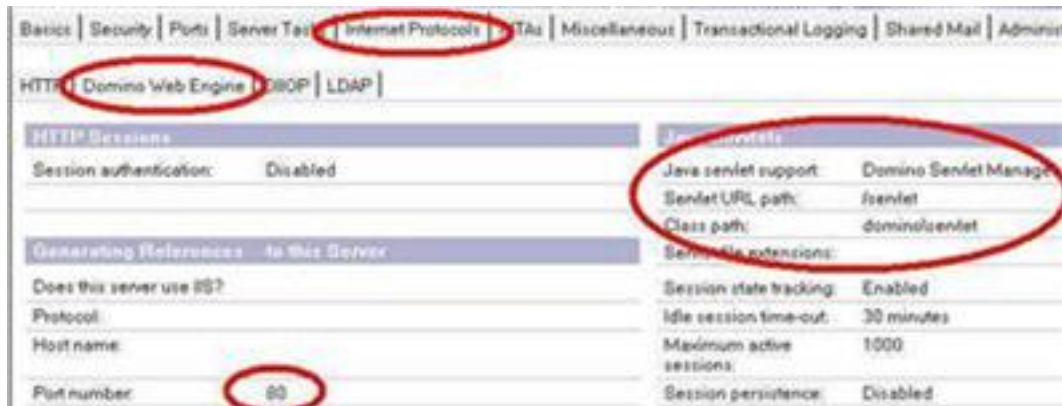
Basics		Mail
First name:	xmlmill	Mail
Middle name:		Dom
Last name:	xmlmill	Mail
User name:	xmlmill xmlmill/LAB xmlmill xmlmill xmlmill	Mail Forw Interr
Alternate name:		Form incom
Short name/UserID:	xml	Wher
Personal title:		unen
Generational qualifier:		ency

☞ The Notes-agent (**GenerateQuote**) will **"run as webuser"**, this means it will run with

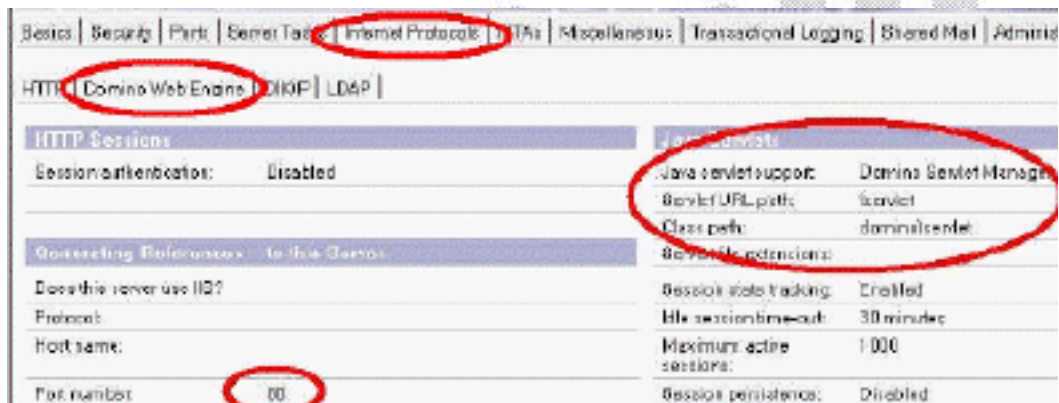
the `accessrights` of the `xmlmill-user` you define in the `servlets.properties` file (see 4.5).

4.4. Check your Domino Server Document in the Domino-directory

In your **Domino directory** go to **servers - server** to open your server document. In your server document locate the tab **security** and make sure that the `xmlmill-user` has the right to **run restricted Lotus Script/Java-agents**.



Locate the tab **Internet Protocols** and **Domino Web Engine**. Enable the **Java Servlet Support** by choosing **Domino Servlet Manager** instead of **None**. Leave the **Servlet URL path** set to `/servlet`. Add `domino\servlet` to the **Class path** if it isn't there already. This points to the directory where the class-files are stored on the file system. It is the directory you had to create in 4.2.



4.5. Create the `servlets.properties` file

The `servlets.properties` file should be created in the `\lotus\domino\data` directory.

4.5.1. Default `servlets.properties` file

Add the following three lines:

```
# Defines an alias name for the com.xmlmill.domino.xmlmillr6 servlet.
servlet.xmlmillr6.code=com.xmlmill.domino.xmlmillr6

# Define the database, username and password. Make user there are no spaces in the
username.
servlet.xmlmillr6.initArgs= db1=usecases.nsf xmlmill xmlmill

# Define that the servlet is initialised when starting the Domino server.
servlets.startup = xmlmillr6
```

☞ Please note that **servlet** in above lines should be all in lowercase. If not, the Domino server will not find the `xmlmillr6` class.

In the second line the `db1` argument defines the database `usecases.nsf` and the servlet should access this database with the user `xmlmill` and password `xmlmill`. In case your username consists

of firstname and lastname, you should have created an alias consisting of one word in the person document (see 4.4.) and use it here as username.

The third line we state that the servlet should be loaded at system startup.

A default **servlets.properties** file is included in the download (in the **domino\installation**-directory).

☞ *If you have licensed the multiple database version of XMLMill you can add additional databases by adding a additional arguments; **db2**, **db3**, ... with the respective database names, usernames and passwords, as in the example below:*

```
servlet.xmlmillr6.code=com.xmlmill.domino.xmlmillr6
servlet.xmlmillr6.initArgs= db1=usecases.nsf xmlmill xmlmill, db2=usecases2.nsf xmlmill
xmlmill, loglevel=DEBUG
servlets.startup = xmlmillr6
```

You should give **xmlmill** at least editor-rights to the usecases database to be able to create and edit the xml-document. (You can limit the xmlmill access-rights to author, but then you have to add an author-field with the user xmlmill in it to the design of the xml-form).

If you don't specify a user and password to access the notes database, the access level of the server will be used.

4.5.2. Adding a **loglevel** parameter

A second argument **loglevel** can be added to define whether or not all warnings, errors and fatalerrors should be logged on the console. There are 7 different loglevels:

- ◆ **OFF**
- ◆ **ALL**
- ◆ **FATAL**
- ◆ **ERROR**
- ◆ **WARN**
- ◆ **INFO**
- ◆ **DEBUG**

```
# Defines an alias name for the com.xmlmill.domino.xmlmillr6 servlet.
servlet.xmlmillr6.code=com.xmlmill.domino.xmlmillr6

# Define the database, username and password. Make user there are no spaces in the
username.
servlet.xmlmillr6.initArgs= db1=usecases.nsf xmlmill xmlmill, loglevel=INFO

# Define that the servlet is initialised when starting the Domino server.
servlets.startup = xmlmillr6
```

Set the loglevel to **OFF** if you do not want to clutter your console with messages generated by XMLMill (for example in a production environment).

☞ *Please consult the XMLMill User guide chapter: XMLMill logging, for more information on the loglevel parameters. The XMLMill user guide can be found in the **/docs**-directory in the download.*

4.5.3. Adding a **realpath** parameter

As of this version the **realpath** can be defined. This is an optional parameter that represents the absolute path to the **xmlmill** directory (in the **html/** directory).

This parameter can be used in case the path to the xmlmill directory, which is normally automatically detected by XMLMill, cannot be found.

When this path cannot be found, the log directory will display following error:

```
...
```

```
09/11/2004 08:47:48 HTTP JVM: INFO [Thread-115]: Realpath: null
...
09/11/2004 08:47:57 HTTP JVM: INFO [Thread-115]: Transforming with:
null/xsl/yourstylesheet.xsl
...
09/11/2004 08:47:57 HTTP JVM: INFO [Thread-115]:
Catch-error:javax.servlet.ServletException: xsl file not found
```

Note that the **Realpath: null** message is generated. If this is the case, use the **realpath** parameter to define this path manually, as in following example:

```
# Defines an alias name for the com.xmlmill.domino.xmlmillr6 servlet.
servlet.xmlmillr6.code=com.xmlmill.domino.xmlmillr6

# Define the database, username and password. Make user there are no spaces in the
username.
servlet.xmlmillr6.initArgs= db1=usecases.nsf xmlmill xmlmill, loglevel=INFO,
realpath=/lotus/domino/html/xmlmill

# Define that the servlet is initialised when starting the Domino server.
servlets.startup = xmlmillr6
```

- ☞ The **realpath** parameter contains the path upto and including the **xmlmill** directory.
- ☞ Use this parameter **only** if this error occurs. If not, let XMLMill automatically detect the **realpath**.

4.5.4. Adding a **config** parameter

It is possible to define your own Type1-fonts. To use an external Type1 font you need:

- ◆ the corresponding font-metrics file (**.afm**-file)
- ◆ the corresponding font-program file (**.pfb** or **.pfa**-file)

The locations of these two files need to be defined in a configuration file. This external configuration file may be placed somewhere on the filesystem but in case of XMLMill for Domino you can best place it in your **\lotus\domino\data**-directory. You need to define the location of the configuration file in your **servlets.properties** file, so you should add an extra parameter to the **servlets.properties** file. In this case the **servlets.properties** file could look like this (pay attention to the config-parameter in the example below):

```
# Defines an alias name for the com.xmlmill.domino.xmlmillr6 servlet.
servlet.xmlmillr6.code=com.xmlmill.domino.xmlmillr6

# Define the database, username and password. Make user there are no spaces in the
username.
servlet.xmlmillr6.initArgs= db1=usecases.nsf xmlmill xmlmill, loglevel=INFO ,
config=file:/d:/lotus/domino/data/config.xml

# Define that the servlet is initialised when starting the Domino server.
servlets.startup = xmlmillr6
```

For more information on defining your own Type1-fonts, please refer to the XMLMill user guide, chapters XMLMill Type1 Fonts and XMLMill Configuration. The XMLMill user guide can be found in the **/docs**-directory in the download.

4.5.5. Adding a **logfile** parameter

It is possible to define a log-file where XMLMill's messages should be sent to (instead of the console):

You need to define the location of the logfile in your **servlets.properties** file, so you should add an extra parameter to the **servlets.properties** file. In this case the **servlets.properties** file could look like this (pay attention to the logfile-parameter in the example below):

```
# Defines an alias name for the com.xmlmill.domino.xmlmillr6 servlet.
servlet.xmlmillr6.code=com.xmlmill.domino.xmlmillr6

# Define the database, username and password. Make user there are no spaces in the
username.
servlet.xmlmillr6.initArgs= db1=usecases.nsf xmlmill xmlmill, loglevel=INFO ,
logfile=file:/d:/lotus/domino/data/log/xmlmill.txt
```

```
# Define that the servlet is initialised when starting the Domino server.
servlets.startup = xmlmillr6
```

☞ *The value should represent the location and name of the logfile as an URI. The URI should be fully resolved.*

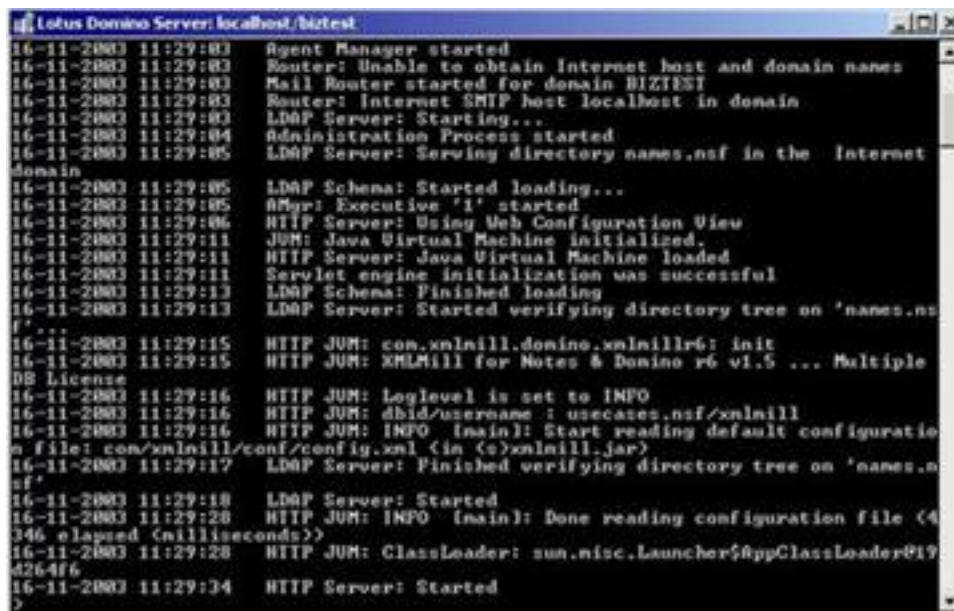
4.6. Restarting your Domino-Server

In the previous sections you made changes to:

1. The Domino-Server document
2. The servlets.properties file

All these changes require that you restart (not reboot) your domino-server. So restart it by issuing the domino-console command **restart server**. If you detect an error after start-up and you need to change something in the server document or the servlets.properties file, do not forget to restart your domino server after you applied the changes.

When you restart your server with the **restart server**-console command, you see the initialization of the servlet.



```
Lotus Domino Server: localhost/biztest
16-11-2003 11:29:03 Agent Manager started
16-11-2003 11:29:03 Router: Unable to obtain Internet host and domain names
16-11-2003 11:29:03 Mail Router started for domain BIZTEST
16-11-2003 11:29:03 Router: Internet SMTP host localhost in domain
16-11-2003 11:29:03 LDAP Server: Starting...
16-11-2003 11:29:04 Administration Process started
16-11-2003 11:29:05 LDAP Server: Serving directory names.nsf in the Internet
domain
16-11-2003 11:29:05 LDAP Schema: Started loading...
16-11-2003 11:29:05 AMM: Execution '1' started
16-11-2003 11:29:06 HTTP Server: Using Web Configuration View
16-11-2003 11:29:11 JVM: Java Virtual Machine initialized.
16-11-2003 11:29:11 HTTP Server: Java Virtual Machine loaded
16-11-2003 11:29:11 Servlet engine initialization was successful
16-11-2003 11:29:13 LDAP Schema: Finished loading
16-11-2003 11:29:13 LDAP Server: Started verifying directory tree on 'names.nsf'
...
16-11-2003 11:29:15 HTTP JVM: com.xmlmill.domino.xmlmillr6: init
16-11-2003 11:29:15 HTTP JVM: XMLMill for Notes & Domino r6 v1.5 ... Multiple
DB License
16-11-2003 11:29:16 HTTP JVM: LogLevel is set to INFO
16-11-2003 11:29:16 HTTP JVM: dbid/username : usecases.nsf/xmlmill
16-11-2003 11:29:16 HTTP JVM: INFO (main): Start reading default configuratio
n file: con/xmlmill/conf/config.xml (in (c:\xmlmill.jar)
16-11-2003 11:29:17 LDAP Server: Finished verifying directory tree on 'names.nsf'
...
16-11-2003 11:29:18 LDAP Server: Started
16-11-2003 11:29:28 HTTP JVM: INFO (main): Done reading configuration file (<
346 elapsed (milliseconds))
16-11-2003 11:29:28 HTTP JVM: ClassLoader: sun.misc.Launcher$AppClassLoader@19
4264f6
16-11-2003 11:29:34 HTTP Server: Started
```

4.7. Conclusion

The installation of XMLMill in your Domino R7 environment is now finished. Your environment is ready to use XMLMill for Domino to generate .pdf documents on-line (on the fly).

Before switching to the use cases guide (giving some examples of using XMLMill online and in batch), please read the next chapters for an overview of the difference between XMLMill online and XMLMill batch.

☞ *The usecase guide can be found on our website at <http://www.xmlmill.com/rnotes/dusecases.pdf> or in the directory **domino/docs/** in the download.*

☞ *Please also consult our [Where should you go next?](#) chapter giving an overview of which documentation is available.*

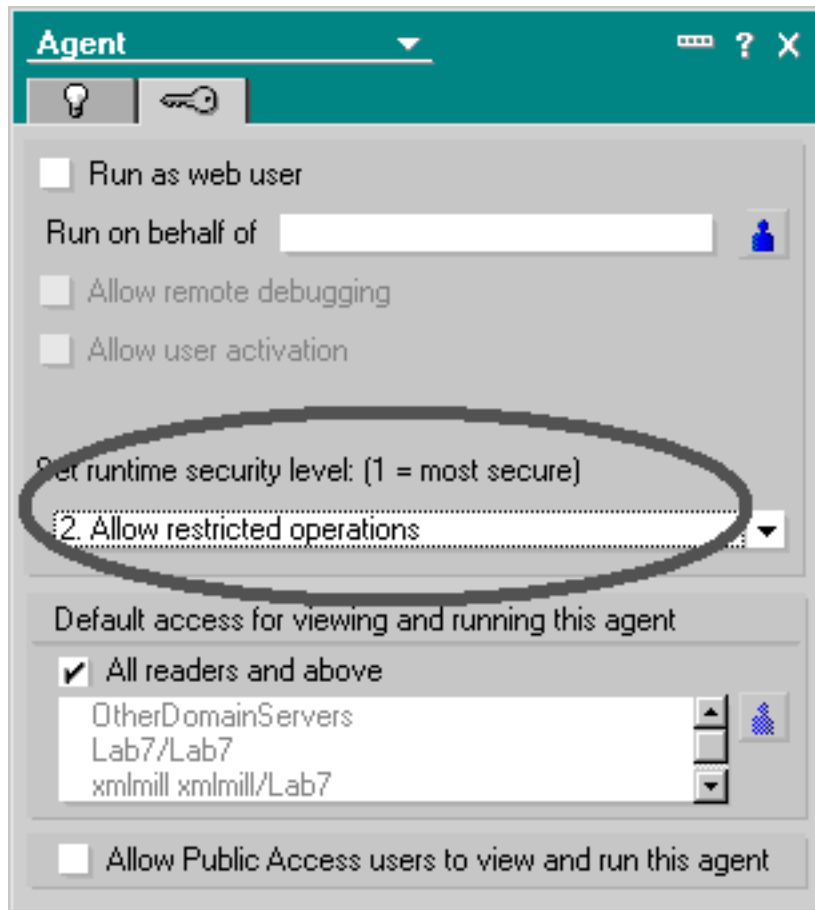
5. XMLMill online

In Domino R7 you can use XMLMill online (this means generating a PDF document on-the-fly from within a browser or a notes client) by calling the XMLMill connector. This section explains how you can do this. For detailed information please refer to the **usecases** database in the download (**domino**-directory) and to the first use case in the use cases guide **dusecases.pdf** in the download (**domino\docs**-directory).

5.1. Modify the code behind the 'View PDF' link

To try out this example of generating a PDF based on a quotation-form in Notes, you should modify the code behind the 'View PDF'-link (usecases database). So open the Quote-form in the designer and modify the code behind the hotspots:





5.3. Call the usecases database from your browser

Now you are ready to call the example in the usecases database:

Open your browser and call the database: **http://yourserver/usecases.nsf:**

Before you try out the servlet, verify that the user you have defined in your servlets.properties file (eg. xmlmill) exists in your domino directory, has enough ACL-rights (at least editor-rights) and that he has the proper execution rights to run agents.



Choose **2/0804/P/0002**:

[View PDF](#) [Save PDF](#) [Save and Mail PDF](#)
[View and Save PDF](#) [View, Save and mail PDF](#)

Reference: 2/0804/JP/0002
SendTo: Tania Schuddinck/biztest

- ▶ [Company/Contact](#)
- ▶ [ProductTables](#)
- ▶ [Text Paragraphs](#)
- ▶ [Actors](#)

Select **View PDF**, after a few seconds Acrobat reader will open and the generated PDF document is shown in the browser. The first time you execute the servlet after server startup, this will take longer than the 2nd, 3rd time and so on.



6. XMLMill in batch

XMLMill in batch can be used in both Domino R5,R6 and R7. Batch-processing means that you call XMLMill from a scheduled agent.

The .cmd file is placed somewhere on a shared networkdrive, so that your server can access it. If you want to use XMLMill in batch you have to follow the instructions in the Installation guide for R5 **even if you are using R7**. You can find it on our website.

http://www.xmlmill.com/rnotes/installation_guide_r5.pdf or in the directory **domino\docs** in the download.

In the batch files you will call from within your application, you can refer to the **java.exe** contained in the **\\your_server\Lotus\Domino\jvm\bin** directory.

Once you've followed the instructions in the installation guide, please switch to our domino use cases guide **dusecases.pdf** in the download (**domino\docs**)-directory and read the use case 2,3 or 4.

xmlmill

7. Where should you go next?

Our documentation set consists of following guides:

- ◆ **The installation guide for on-line-generation of PDF's in R7** (this document) can be found on the website at http://www.xmlmill.com/rnotes/installation_guide_r7.pdf or in the directory **domino/docs** in the download. It gives a detailed explanation of preparing your Domino R7-environment for using the XMLMillR6-servlet to generate PDF's on-line.
- ◆ **The domino use cases guide** can be found on the website at <http://www.xmlmill.com/rnotes/dusecases.pdf> or in the directory **domino/docs** in the download. It gives a detailed explanation of using XMLMill for on-line and batch-generation of PDF's following 4 use cases.
- ◆ **The installation guide for batch-generation of PDF's in R7, R6 and R5** can be found on the website at http://www.xmlmill.com/rnotes/installation_guide_r5.pdf or in the directory **domino/docs** in the download. It gives a detailed explanation of preparing your Domino R7, R6 or R5-environment for using the batch process to generate PDF's via a scheduled Notes-agent.
- ◆ **The XMLMill user guide** can be found on the website at <http://www.xmlmill.com/rnotes/userguide.pdf> or in the directory **docs** in the download. It gives a general overview of XMLMill. You can also find more information about using external fonts and logging in this guide.
- ◆ **The XMLMill DTD guide** can be found on the website at <http://www.xmlmill.com/rnotes/dtdguide.pdf> or in the directory **docs** in the download. It gives an overview of the tags that can be used in XMLMill.
- ◆ **The Samples guide** can be found on the website at <http://www.xmlmill.com/rnotes/samplesguide.pdf> or in the directory **docs** in the download. It explains how to generate all examples contained in the download.

After reading this document you need to switch to the use cases guide to try out the use case(s) of interest. To find out more about the concept of XMLMill following chapters of the **XMLMill User Guide**: can be read:

- ◆ Overview
- ◆ XMLMill Logging
- ◆ XMLMill Namespace
- ◆ XMLMill Type1 Fonts
- ◆ XMLMill Configuration
- ◆ XMLMill Interactive
- ◆ XMLMill Batch

If the domino-developer is interested in the tags he may use in XMLMill he has to consult the XMLMill DTD guide.
